



Progress in Intellectual Disability Health Care: Progress on the establishment of the National Centre of Excellence

Julian Trollor

j.trollor@unsw.edu.au

<https://3dn.unsw.edu.au/>



What is the National Centre of Excellence?

The Centre is a group of people who work together.

Some of the people have an Intellectual Disability or a family member with an Intellectual Disability.

Other people are health professionals, advocates or researchers.



UNSW
SYDNEY



UNSW
Department of Developmental
Disability Neuropsychiatry

What will the National Centre of Excellence do?

Work out what needs to be done to improve the health of people with intellectual disability

Lead new work to improve the health care of people with intellectual disability



UNSW
SYDNEY



UNSW
Department of Developmental
Disability Neuropsychiatry

Who is starting the National Centre of Excellence?

A Consortium is starting the Centre.

A Consortium is a team.

The Australian Government Department of Health and Aged Care chose the Consortium to run the Centre.

There are 9 groups in the Consortium.



UNSW
SYDNEY



UNSW
Department of Developmental
Disability Neuropsychiatry

Who is the Consortium?

The University of NSW

The Centre for Disability Studies at Sydney University

The Council for Intellectual Disability

Down Syndrome Australia

First Peoples Disability Network

Intellectual Disability and Autism Service at the Mater Hospital in Brisbane

The University of Melbourne

Queenslanders with Disability Network

The Telethon Kids Institute in Perth



Who else is involved in the National Centre of Excellence ?

Another 57 organisations and people will also be involved in the work.

PANDDA is a partner.

They include universities, health services, government, regulatory authorities and disability organisations.

Everyone needs to work together to improve all types of health care.



UNSW
SYDNEY



UNSW
Department of Developmental
Disability Neuropsychiatry

How will the National Centre of Excellence operate?

Staff will manage the Centre from UNSW Sydney

The staff will be led by a Centre Director.

The staff will take advice from our Learn and Lead group of people with intellectual disability.

The staff will also take advice from our First Nations leadership Group.



UNSW
SYDNEY



UNSW
Department of Developmental
Disability Neuropsychiatry

How will the National Centre of Excellence operate?

There will be a Centre Council

The Council makes decisions about the work the Centre will do.

The Council includes people with intellectual disability and family members of people with intellectual disability who have complex communication needs.

A person with intellectual disability will co-chair the Council.

The Council also includes a First Nations Representative and other experts from universities, health services, and advocacy.



UNSW
SYDNEY



UNSW
Department of Developmental
Disability Neuropsychiatry

How will the National Centre of Excellence operate?

Three other groups will help advise the Centre.

There will be an International advice group.

There will be a National advice group.

There will be a First Nations advice group.



UNSW
SYDNEY



UNSW
Department of Developmental
Disability Neuropsychiatry

How will the National Centre of Excellence Operate?

The work will be done in 4 teams.

Each team has people who work together from different parts of Australia.

The teams are:

- Driving Change
- Health Services Development
- Resources and Innovation
- Research and Data



UNSW
SYDNEY



UNSW
Department of Developmental
Disability Neuropsychiatry

Teams

Driving Change

provide national leadership in intellectual disability health by:

- *driving inclusion of people with intellectual disability in mainstream health initiatives,*
- *modelling leadership in driving change and*

ensuring Centre acts as a catalyst for action on recommendations made by Disability Royal Commission.

Research and Data

support intellectual disability health by:

- *building research capacity in intellectual disability health*
- *leading research agenda setting*
- *leading health data initiatives*
- *leading inclusive research*

leading the development of research and approaches to research which support translation into meaningful benefit to people with intellectual disability



UNSW
SYDNEY



UNSW
Department of Developmental
Disability Neuropsychiatry

Teams

Resource and Innovation

establish a central hub of expertise, resources and research in the health care of people with intellectual disability and their families, and health and disability service providers.

Health Services Development

lift the capability of health services to better meet the need of people with intellectual disability by:

- *leading strategy to lift health service system innovation*
- *developing an overarching strategy to lift health service system capacity in each of its components*
- *developing specific First Nations intellectual disability health capability*
- *supporting access to and development of clinical expertise in states and territories that do not currently have specialised services*
- *undertaking activities designed to build workforce capacity*
- *fostering innovation and best practice*



UNSW
SYDNEY



UNSW
Department of Developmental
Disability Neuropsychiatry

How will people with Intellectual Disability be involved?

People with Intellectual Disability have had a say in what is important for the Centre.

People with intellectual disability are involved all activities and on the Council.

People with Intellectual Disability will work at the Centre.

There will be a Lead staff member with Intellectual Disability.

People with Intellectual Disability will be staff members of the Teams.

People with Intellectual Disability will receive the support they need in their work.

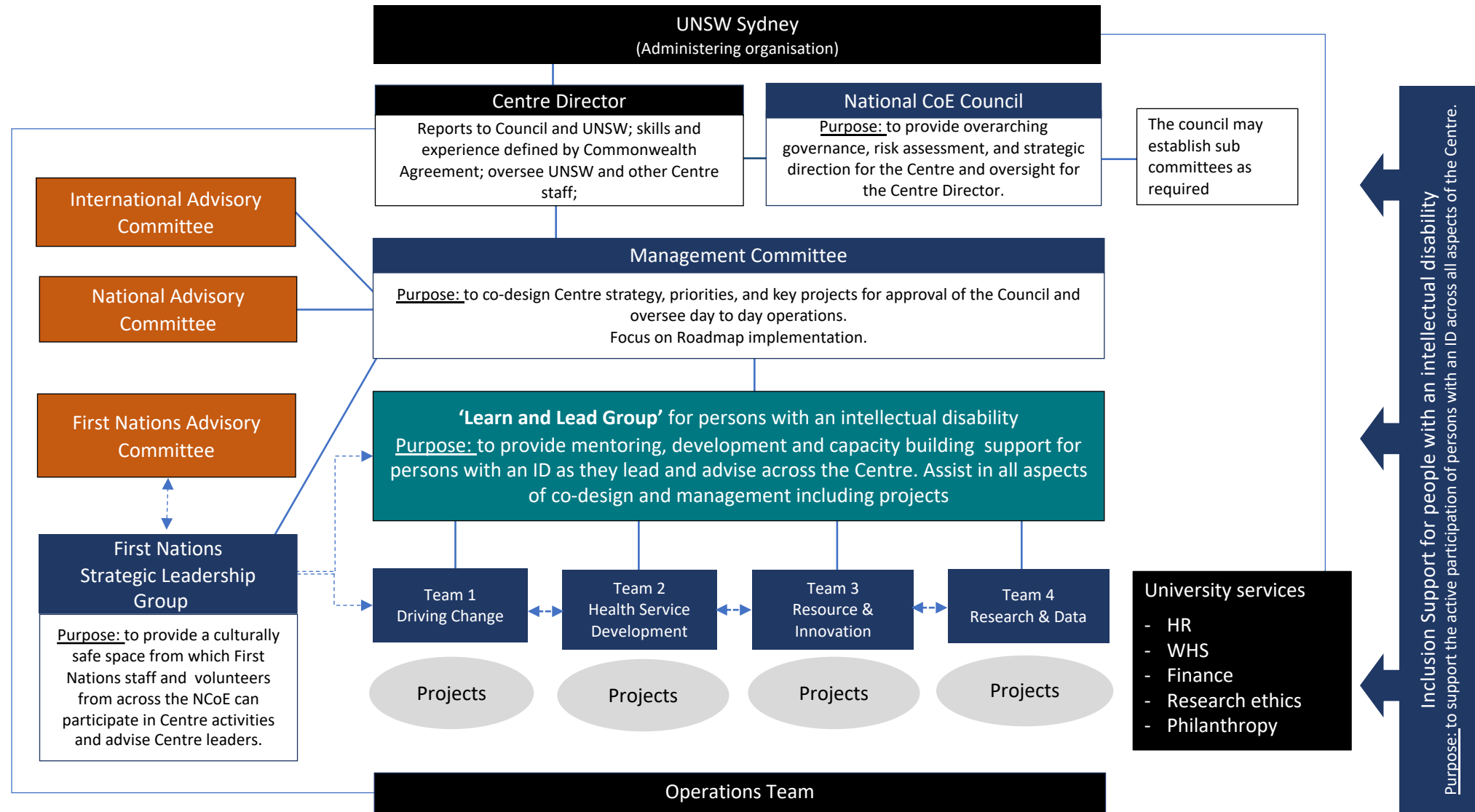


UNSW
SYDNEY



UNSW
Department of Developmental
Disability Neuropsychiatry

National Centre of Excellence in Intellectual Disability Health – Governance (updated September 2023)



What has been done so far?

There is lots of work to get the Centre started.

UNSW has signed an agreement with the Australian Government.

The Consortium has planned the work for the first year.

Some positions for the Centre are being advertised.

We are looking for space at UNSW.



UNSW
SYDNEY



UNSW
Department of Developmental
Disability Neuropsychiatry

How can I be involved?

We need everyone's help.

www.3dn.unsw.edu.au/ncoe

If you want, you can put your email on a list.

We will tell you about the launch.

We will let you know about jobs at the Centre.

There are other things you can get involved in.



UNSW
SYDNEY



UNSW
Department of Developmental
Disability Neuropsychiatry

What will happen next?

The Consortium will sign an agreement.

People will be able to apply for jobs at the centre.

The Hon Ged Kearney MP, Assistant Minister for Health and Aged Care. will launch the Centre on 13th October.

The Council will meet to make decisions about the work.

The Director will start other committee meetings.

The good work will start!



UNSW
SYDNEY



UNSW
Department of Developmental
Disability Neuropsychiatry

What other opportunities will there be?

Direct

PhD Scholarships

Seed funding- scope TBD-
health services research
innovation.

Collaboration with Centre
academic staff.

Future opportunities for
subcontracting to conduct
activities specified in the AWP.

Indirect

MRFF Round

Future collaboration potential

National Disability Data Asset



UNSW
SYDNEY



UNSW
Department of Developmental
Disability Neuropsychiatry

Thank you

Please ask me a question.